

80A01-002B

AUTOMATIC STAINLESS STEEL CANNER

370W/110V/9A - Bilingual display

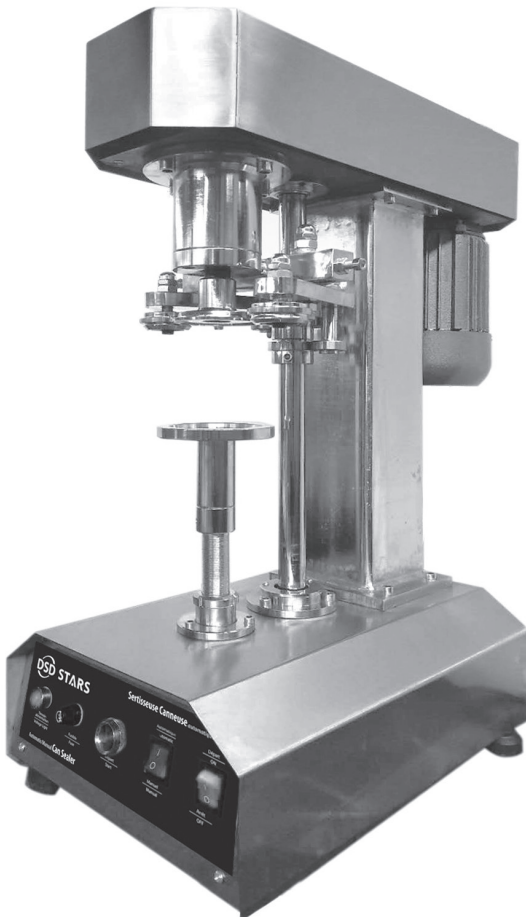
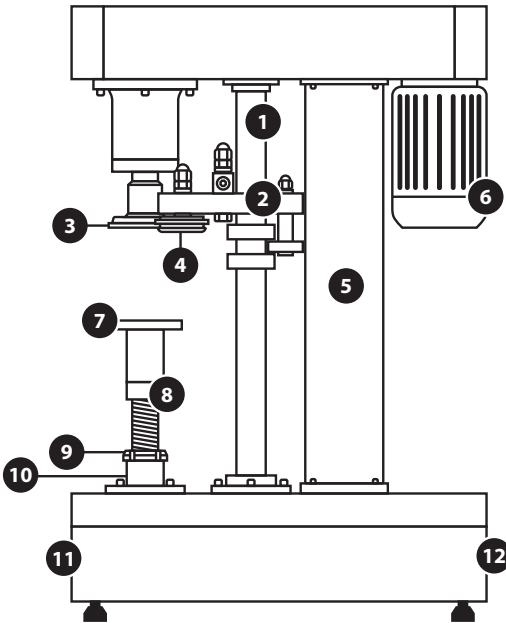
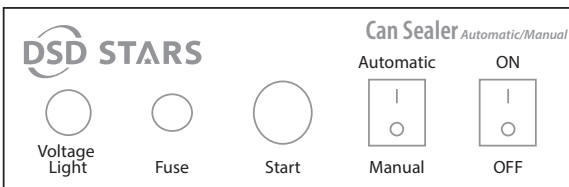


Fig 1 — Machine components

- | | |
|----------------------|-------------------------------|
| 1 Cam shaft | 7 Tray |
| 2 Pressing wheel arm | 8 Screw stem |
| 3 Pressure head | 9 Lock nut |
| 4 Roller | 10 Lifting rod |
| 5 Vertical column | 11 Control panel |
| 6 Motor | 12 Power line and foot switch |

Fig 2 — Control panel

ADJUST THE CANNER

Before using the canner, be sure to read the entire manual and properly adjust the machine for your use.

Adjusting the height of the tray

The tray must be adjusted to the size of cans used.

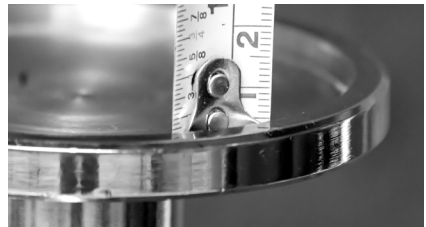
1. Put the switch in manual mode;
2. Raise the tray (*Fig 1, point 7*) by pressing the start button (*Fig 2*) until it is at its highest;
3. Use the tool provided to loosen the lock nut (*Fig 1, point 9*);
4. Adjust the distance between the bottom of the plate (*Fig 1, point 7*) and the pressure head (*Fig 1, point 3*) by turning the screw rod (*Fig 1, point 8*). **For a standard 540 ml can, the distance should be 4 $\frac{3}{8}$ " (*Fig 3*).**

Detect problems

If the tray rises and slopes down quickly, **the board is too high.**

If the can stops rotating during sealing, **the tray is too low.**

Fig 3 — Measure tray's height



ADJUST THE CANNER (CONTINUED)

Adjusting the rollers

Repeat the following steps for the roller (*Fig 1, point 4*) on the left side then the one on the right side.

Adjusting the roller height

1. Loosen the nuts on the top of the roller using a $\frac{3}{4}$ " or 19mm wrench (*Fig 4 and 5, point 1*);
2. In manual mode, press the start button until the roller is as close as possible to the pressure head (*Fig 1, point 3*);
3. Turning the bottom bolt (*Fig 4 and 5, point 2*) with an Allen key, adjust the position until the widest part of the roller and the pressure head is almost in contact, leaving a very fine gap in between. *For ideal adjustments, refer to Fig 6 and Fig 7;*
4. Securely tighten the nuts on the top of the rollers.

Adjusting the roller pressure on the pressure head

1. Locate the pressure adjustment bar (*Fig 8*) connecting the two pressing wheel arms (*Fig 1, point 2*);
2. Loosen the nuts on the top, then the set screw and its lock nut (*Fig 8, points 1, 2 and 3*);
3. Roughly adjust the distance between the roller and the pressure head and tighten the nuts on the top. *For ideal adjustments, refer to Fig 6 and Fig 7;*
4. Adjust the distance between the roller and the pressure head precisely using the pressure screw (*Fig 8, point 3*). The roller and the pressure head should touch each other lightly. *For ideal adjustments, refer to Fig 6 and Fig 7;*
5. Securely tighten the top nuts and set screw lock nut.

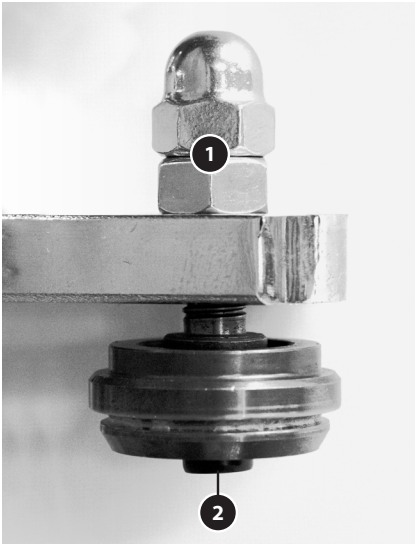
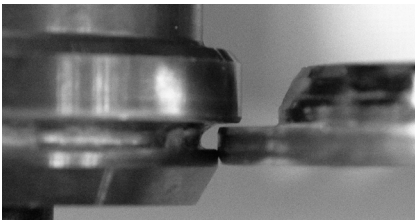
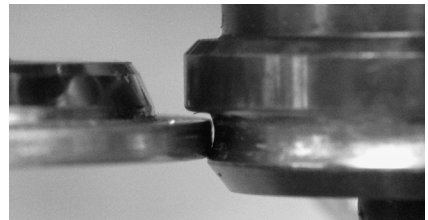
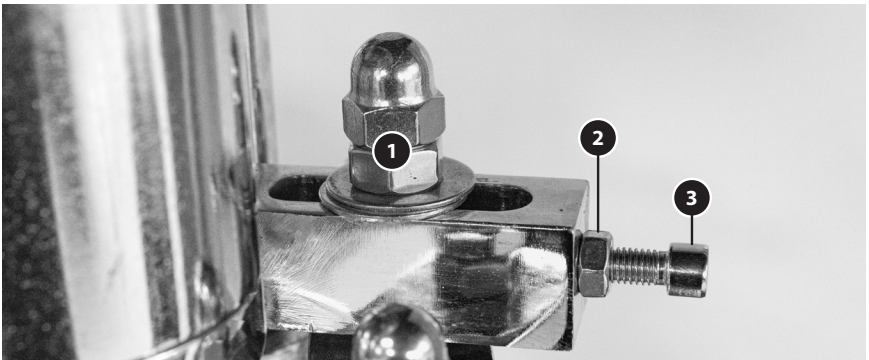
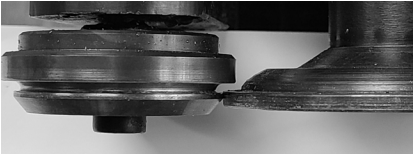
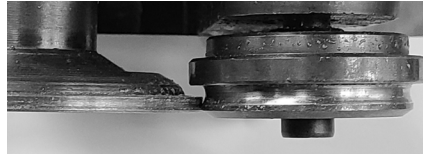
Fig 4 — Left sealing roller**Fig 5 — Right sealing roller****Fig 6 — Adjusted left roller****Fig 7 — Adjusted right roller****Fig 8 — Right end of the pressure adjustment bar**

ILLUSTRATION OF ADJUSTMENTS.

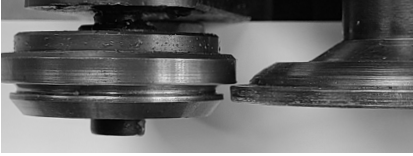
Left Roller - Too high



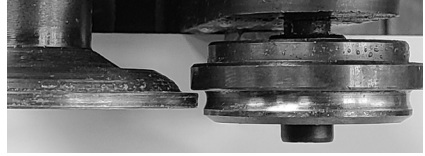
Right Roller - Too high



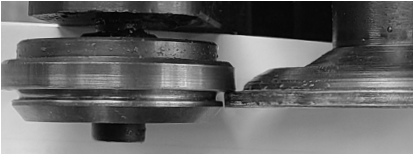
Left Roller - Too far to the left



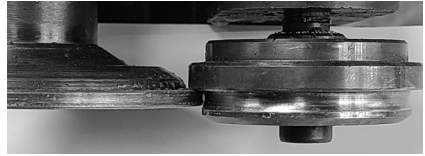
Right Roller - Too far to the right



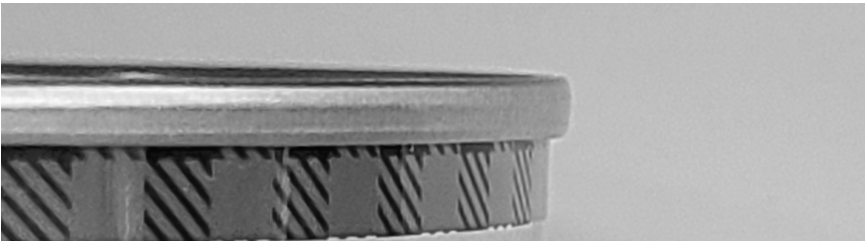
Left Roller - Too low

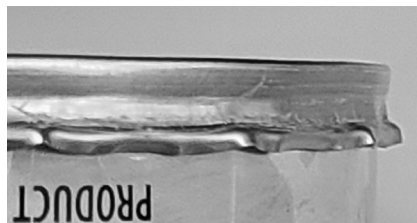


Right Roller - Too low



Sealing with a well-adjusted machine



Tray too low**Lack of pressure on the left****Lack of pressure on the right****Lack of pressure on both sides****START-UP AND USE**

Wearing protective clothing, gloves and a visor is required when handling hot syrup. Contact with the skin is very dangerous and should be avoided.

1. Connect the power;
2. With the mode switch (*Fig 2*), choose Automatic;
3. Turn the power switch ON;
4. Place the can on the tray;
5. Put the lid on the mouth of the can;
6. For a few seconds, press the pedal or press the Start button;
7. The machine will begin its seal cycle. The cycle is finished when the tray goes back down.

Once the sealing cycle is complete, the machine is ready for the next can by repeating steps **4 to 7**.

TECHNICAL PARAMETERS

Motor: YB02-4 0.37 kW (vertical)

Weight: 70kg

Dimensions: length 600 × width 320 × height 700 (mm)



2515, chemin de l'Aéroport,
Thetford Mines (Québec) G6G 5R7
CANADA

Phone: **+1 888 334-8001**

Fax: **+1 888 334-8005**

Email: **info@dsdinternational.net**
