

WOOD EVAPORATOR

TOLE INOX



Wood Evaporator includes the following items :

- 1x flue pan
- Flat pans (qty & dimensions depending on evaporator size)
- 1x entry float box
- 1x transfer float box (STD or LX depending on evaporator size)
- 2x visual sap level
- Pan Output Adapter and ball valve
- 1x base stack (dimensions depending on evaporator size)
- 1x roof stack
- Smoke pipes (qty & dimensions depending on evaporator size)
- 1x collar
- 1x stack cover (model depending on evaporator size)
- 1x dipper (2' to 4' : 5" / 5' to 6' : 6")
- 1x support for dipper
- 1x syrup 3" gauge, 9" stem
- 3x 2" ext. plugs (excluding 2'x6')

WOOD EVAPORATOR

Specifications

- The base of the evaporator is made of stainless steel type 304 BA
- Thightener
- Flue pan and flat pan made of stainless steel type 304 BA finish (mirror). Sides 20 ga thickness and bottom 22 ga thickness
- Food grade argon welding
- Efficient & quick-response control float
- Transfer between pans with advanced design
- Several sizes available from 2' X 6' to 6' X 16'
- Custom sizes also available



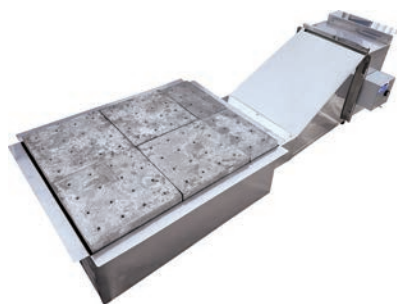
Airtight refractory cement insulated door

Wood evaporator Technical specifications

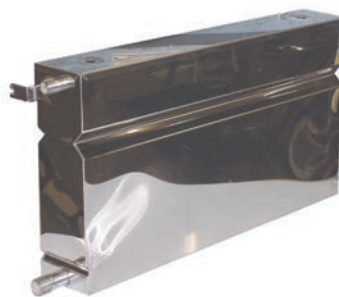
Product number	Qty Airtight insulated door	Dimensions	Flue Pan	Flat Pan	Tile	Transfer box	Transfer	Ball Valve	Base Stack	Smoke	Stack cover
EVB-24-072	1	2'X6'	1X 24"x48"	1X 24"x24"	No	STD	½"	1"	1X 10"x4'	2X 10"	Chinese
EVB-24-096	1	2'X8'	1X 24"x60"	2X 24"x18"	No	STD	1 ½"	1"	1X 10"x5'	3X 10"	Chinese
EVB-30-096	1	2 ½'X8'	1X 30"x60"	2X 30"x18"	No	STD	1 ½"	1 ¼"	1X 12"x5'	3X 12"	Chinese
EVB-30-120	1	2 ½'X10'	1X 30"x84"	2X 30"x18"	No	STD	1 ½"	1 ¼"	1X 12"x5'	3X 12"	Chinese
EVB-36-120	1	3'X10'	1X 36"x84"	2X 36"x18"	Yes	STD	1 ½"	1 ¼"	1X 15"x6'	3X 15"	Tilt stack
EVB-36-144	1	3'X12'	1X 36"x104"	2X 36"x20"	Yes	LX	1 ½"	1 ¼"	1X 15"x6'	4X 15"	Tilt stack
EVB-42-144	1	3 ½'X12'	1X 42"x104"	2X 42"x20"	Yes	LX	1 ½"	1 ¼"	1X 18"x6'	4X 18"	Tilt stack
EVB-48-144	2	4'X12'	1X 48"x104"	2X 48"x20"	Yes	LX	1 ½"	1 ¼"	1X 20"x8'	4X 20"	Tilt stack
EVB-48-168	2	4'X14'	1X 48"x120"	2X 48"x24"	Yes	LX	1 ½"	1 ¼"	1X 20"x8'	4X 20"	Tilt stack
EVB-60-168	2	5'X14'	1X 60"x120"	2X 60"x24"	Yes	LX	1 ½"	1 ½"	1X 22"x10'	4X 22"	Tilt stack
EVB-60-192	2	5'X16'	1X 60"x120"	3X 60"x24"	Yes	LX	1 ½"	1 ½"	1X 22"x10'	4X 22"	Tilt stack
EVB-72-168	2	6'X14'	1X 72"x120"	2X 72"x24"	Yes	LX	1 ½"	1 ½"	1X 24"x10'	5X 24"	Tilt stack
EVB-72-192	2	6'X16'	1X 72"x120"	3X 72"x24"	Yes	LX	1 ½"	1 ½"	1X 24"x10'	6X 24"	Tilt stack

AVAILABLE OPTIONS

Econowood



Water pan



Side gutter

