

ECOVAP EVAPORATOR

**TOLE
INOX**



ECOVAP CONSTITUTES
A MAJOR TECHNOLOGICAL ADVANCE IN THE
FIELD OF MAPLE SYRUP PRODUCTION

ECOVAP EVAPORATOR

Specifications

- Recovers all the energy contained in the vapor
- Ecological, powered only by electricity
- No light fuel oil combustion
- No burning wood or pellets
- No oil tank, wood chamber or pellet silo
- No stack for smoke, nor for vapor
- Reduced risk of fire
- Impossible to burn out pan
- Ease of cleaning and use
- Fully Automated
- Instant and risk-free shutdown
- Very low energy consumption per gallon of syrup produced
- Continuous syrup production, at uniform and controlled temperature
- Excellent control and high stability of syrup quality
- Safe
- Proven technology since 2013

Maple sap Capacity / Syrup (imp. gal. /h) based on °Brix of concentrated sap

Model	°Brix of concentrated sap				
	8°	10°	12°	14°	16°
ECOVAP 125	95 / 9	98 / 12	101 / 14	104 / 18	107 / 21
ECOVAP 080	75 / 7	77 / 9	79 / 11	82 / 14	84 / 16
ECOVAP 160	143 / 13	147 / 17	151 / 22	156 / 26	161 / 31
ECOVAP 225	200 / 19	205 / 24	211 / 30	218 / 37	225 / 44
ECOVAP 340	291 / 27	299 / 36	308 / 44	317 / 54	327 / 64
ECOVAP 440 Pw	384 / 36	395 / 47	406 / 58	418 / 71	431 / 84

Maple sap Capacity / Syrup (imp. gal. /h) based on °Brix of concentrated sap

Model Pw	°Brix of concentrated sap		
	18°	20°	21°
ECOVAP 225 Pw	232 / 51	240 / 59	245 / 64
ECOVAP 340 Pw	338 / 75	350 / 87	357 / 93
ECOVAP 440 Pw	446 / 98	461 / 114	470 / 122

ECOVAP™ evaporator Technical specifications

Product number	Description	Dimensions	Amp max.	Breaker #1	Breaker #2	Breaker #3	Breaker #4
EV125-230	Single-phase	45" X 17'	180	150A	75A	----	----
EV080-230	Single-phase	42" X 15'	130	125A	75A	----	----
EV080-575	Three-phase	42" X 15'	30	30A	30A	----	----
EV160-230	Single-phase	56" X 17'	235	200A	150A	----	----
EV160-575	Three-phase	56" X 17'	55	50A	40A	----	----
EV225-230	Single-phase	70" X 17'	275	250A	150A	----	----
EV225-575	Three-phase	70" X 17'	65	75A	40A	----	----
EV225-230-PW	Single-phase - Power unit	70" X 17'	400	250A	150A	2X 80A	15A/120V
EV225-575-PW	Three-phase - Power unit	70" X 17'	94	75A	40A	30A	15A/120V
EV340-230	Single-phase	84" X 21'	450	400A	150A	----	----
EV340-575	Three-phase	84" X 21'	85	90A	40A	----	----
EV340-230-PW	Single-phase - Power unit	84" X 21'	617	400A	150A	2X 125A	15A/120V
EV340-575-PW	Three-phase - Power unit	84" X 21'	126	90A	40A	60A	15A/120V
EV440-575-PW	Three-phase - Power unit	101" X 22'	150	100A	40A	60A	15A/120V
EV440-230-PW	Single-phase - Power unit	101" X 22'	742	550A	150A	2X 125A	15A/120V

HP WOOD EVAPORATOR

TOLE INOX



High performance wood Evaporator includes the following items :

- 1x flue pan
- Flat pans (qty and dimensions depending on evaporator size)
- 1x additional flat pan (dimensions depending on evaporator size)
- 1x water pan (dimensions depending on evaporator size)
- 1x side gutter
- 1x entry float box
- 1x transfer float box (STD or LX depending on evaporator size)
- 2x visual sap level
- 1 ½" transfer
- Transfer adapter & ball valve
- Closed hood + opened with 2 hood lights
- 1x concentrate preheater
- 6x vapor stacks (dimensions depending on evaporator size)
- 1x base stack (dimensions depending on evaporator size)
- Smoke stacks (qty & dimensions depending on evaporator size)
- 3x roof stacks
- 3x collars
- 3x stack covers
- 1x dipper (2' to 4' : 5" / 5' to 6' : 6")
- 1x support for dipper
- 1x 3" syrup gauge, 9" stem
- 3x 2" ext. plugs

HP WOOD EVAPORATOR

Specifications

- Refractory cement interior which aims to increase its efficiency (factory made)
- Forced air under the grids and above the door
- Airtight refractory cement insulated door
- Variable speed fan
- Flue pan and flat pan made of stainless steel type 304 BA finish (mirror). Sides 20 ga thickness and bottom 22 ga thickness
- Food grade argon welding
- Efficient and quick-response control float
- Transfer between pans with advanced design
- Enclosed stainless steel hood with access door
- Gutter and recovery pan for water
- Stainless steel preheater, easy to clean
- Evaporator base is made of stainless steel type 304 BA
- Several sizes available from 2 ½' X 8' to 6' X 16'
- Custom sizes also available



Airtight refractory cement insulated door



Preheater included inside the hood

High Performance Wood evaporator Technical specifications

Product number	Dimensions	Qty Airtight insulated door	Flue Pan	Flat Pan	Add. Pan	Water Pan	Transfer box	Ball Valve	Vapor	Base Stack	Smoke
EHP-30-096	2 ½' X 8'	----	1X 30"x60"	2X 30"x18"	1X 30"x18"	1X 30"x5"	STD	1 ¼"	6X 10"	1X 12"x6'	4X 12"
EHP-30-120	2 ½' X 10'	1	1X 30"x84"	2X 30"x18"	1X 30"x18"	1X 30"x5"	STD	1 ¼"	6X 12"	1X 12"x6'	4X 12"
EHP-36-120	3' X 10'	1	1X 36"x84"	2X 36"x18"	1X 36"x18"	1X 36"x5"	LX	1 ¼"	6X 15"	1X 15"x6'	4X 15"
EHP-36-144	3' X 12'	1	1X 36"x104"	2X 36"x20"	1X 36"x20"	1X 36"x5"	LX	1 ¼"	6X 15"	1X 15"x6'	4X 15"
EHP-42-144	3 ½' X 12'	1	1X 42"x104"	2X 42"x20"	1X 42"x20"	1X 42"x5"	LX	1 ¼"	6X 15"	1X 16"x6'	4X 16"
EHP-48-168	4' X 14'	2	1X 48"x120"	2X 48"x24"	1X 48"x24"	1X 48"x5"	LX	1 ¼"	6X 15"	1X 20"x10'	5X 20"
EHP-60-168	5' X 14'	2	1X 60"x120"	2X 60"x24"	1X 60"x24"	1X 60"x5"	LX	1 ½"	6X 18"	1X 20"x10'	4X 20"
EHP-72-168	6' X 14'	2	1X 72"x120"	2X 72"x24"	1X 72"x24"	1X 72"x5"	LX	1 ½"	6X 20"	1X 24"x10'	5X 24"
EHP-72-192	6' X 16'	2	1X 72"x120"	3X 72"x24"	1X 72"x24"	1X 72"x5"	LX	1 ½"	6X 20"	1X 24"x10'	6X 24"

WOOD EVAPORATOR

**TOLE
INOX**



Wood Evaporator includes the following items :

- 1x flue pan
- Flat pans (qty & dimensions depending on evaporator size)
- 1x entry float box
- 1x transfer float box (STD or LX depending on evaporator size)
- 2x visual sap level
- Pan Output Adapter and ball valve
- 1x base stack (dimensions depending on evaporator size)
- 1x roof stack
- Smoke pipes (qty & dimensions depending on evaporator size)
- 1x collar
- 1x stack cover (model depending on evaporator size)
- 1x dipper (2' to 4' : 5" / 5' to 6' : 6")
- 1x support for dipper
- 1x syrup 3" gauge, 9" stem
- 3x 2" ext. plugs (excluding 2'x6')

WOOD EVAPORATOR

Specifications

- The base of the evaporator is made of stainless steel type 304 BA
- Thightener
- Flue pan and flat pan made of stainless steel type 304 BA finish (mirror). Sides 20 ga thickness and bottom 22 ga thickness
- Food grade argon welding
- Efficient & quick-response control float
- Transfer between pans with advanced design
- Several sizes available from 2' X 6' to 6' X 16'
- Custom sizes also available



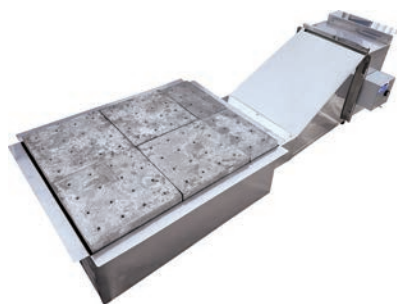
Airtight refractory cement insulated door

Wood evaporator Technical specifications

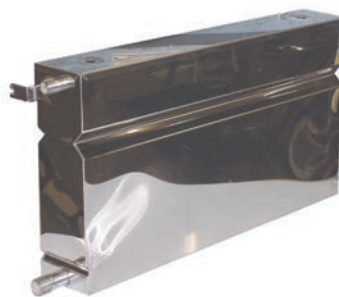
Product number	Qty Airtight insulated door	Dimensions	Flue Pan	Flat Pan	Tile	Transfer box	Transfer	Ball Valve	Base Stack	Smoke	Stack cover
EVB-24-072	1	2'X6'	1X 24"x48"	1X 24"x24"	No	STD	½"	1"	1X 10"x4'	2X 10"	Chinese
EVB-24-096	1	2'X8'	1X 24"x60"	2X 24"x18"	No	STD	1 ½"	1"	1X 10"x5'	3X 10"	Chinese
EVB-30-096	1	2 ½'X8'	1X 30"x60"	2X 30"x18"	No	STD	1 ½"	1 ¼"	1X 12"x5'	3X 12"	Chinese
EVB-30-120	1	2 ½'X10'	1X 30"x84"	2X 30"x18"	No	STD	1 ½"	1 ¼"	1X 12"x5'	3X 12"	Chinese
EVB-36-120	1	3'X10'	1X 36"x84"	2X 36"x18"	Yes	STD	1 ½"	1 ¼"	1X 15"x6'	3X 15"	Tilt stack
EVB-36-144	1	3'X12'	1X 36"x104"	2X 36"x20"	Yes	LX	1 ½"	1 ¼"	1X 15"x6'	4X 15"	Tilt stack
EVB-42-144	1	3 ½'X12'	1X 42"x104"	2X 42"x20"	Yes	LX	1 ½"	1 ¼"	1X 18"x6'	4X 18"	Tilt stack
EVB-48-144	2	4'X12'	1X 48"x104"	2X 48"x20"	Yes	LX	1 ½"	1 ¼"	1X 20"x8'	4X 20"	Tilt stack
EVB-48-168	2	4'X14'	1X 48"x120"	2X 48"x24"	Yes	LX	1 ½"	1 ¼"	1X 20"x8'	4X 20"	Tilt stack
EVB-60-168	2	5'X14'	1X 60"x120"	2X 60"x24"	Yes	LX	1 ½"	1 ½"	1X 22"x10'	4X 22"	Tilt stack
EVB-60-192	2	5'X16'	1X 60"x120"	3X 60"x24"	Yes	LX	1 ½"	1 ½"	1X 22"x10'	4X 22"	Tilt stack
EVB-72-168	2	6'X14'	1X 72"x120"	2X 72"x24"	Yes	LX	1 ½"	1 ½"	1X 24"x10'	5X 24"	Tilt stack
EVB-72-192	2	6'X16'	1X 72"x120"	3X 72"x24"	Yes	LX	1 ½"	1 ½"	1X 24"x10'	6X 24"	Tilt stack

AVAILABLE OPTIONS

Econowood



Water pan



Side gutter



OIL EVAPORATOR

TOLE INOX



Oil Evaporator includes the following items :

- 1x burner cover
- 1x Detecto
- 1x flue pan
- Flat pans
(qty & dimensions depending on evaporator size)
- 1x additional plat pan
(dimensions depending on evaporator size)
- 1x water pan
(dimensions depending on evaporator size)
- 1x side gutter
- 1x entry float box
- 1x transfer float box
(STD or LX depending on evaporator size)
- 2x visual sap level
- 1 ½" transfer
- Transfer adaptater & ball valve
- Closed hood + opened with 2 hood lights
- 1x concentrate preheater
- 6x vapor stacks
(dimensions depending on evaporator size)
- 1x base stack
(dimensions depending on evaporator size)
- Round smoke stacks
(qty & dimensions depending on evaporator size)
- 3x roof stacks
- 3x collars
- 3x stack covers
- 1x dipper (2' to 4' : 5" / 5' to 6' : 6")
- 1x support for dipper
- 1x 3" syrup gauge , 9" stem
- 3x 2" ext. plugs

OIL EVAPORATOR

Specifications

- High quality Beckett burner
- Insulated burner cover
- Easy to use control panel
- Flue pan and flat pan made of stainless steel type 304 BA finish (mirror). Sides 20 ga thickness and bottom 22 ga thickness
- Food grade argon welding
- Easy to use quick-response float control
- Transfer between pans with advanced design
- Enclosed stainless steel hood with access door
- Gutter and recovery pan for water
- Stainless steel preheater, easy to clean
- Evaporator base is made of stainless steel type 304 BA
- Several sizes available from 2 ½' X 8' to 6' X 16'
- Custom sizes also available

WE OFFER A COMPLETE LINE OF OIL EVAPORATORS FOR THE SMALL SUGAR BUSHES OR FOR THE INDUSTRIAL PRODUCTION OF MAPLE SYRUP.

The choice of our components and the well thought manufacturing design of our equipment offers a high performance and complete system for making quality maple syrup.

Oil evaporator Technical specifications

Product number	Description	Flue Pan	Flat Pan	Add. Pan	Water Pan	Transfer box	Ball Valve	Vapor	Base Stack	Smoke
Evh-30-096	2 ½' X 8'	1X 30"x60"	2X 30"x18"	1X 30"x18"	1X 30"x5"	STD	1 ¼"	6X 10"	1X 12"x6'	3X 12"
Evh-30-120	2 ½' X 10'	1X 30"x84"	2X 30"x18"	1X 30"x18"	1X 30"x5"	STD	1 ¼"	6X 12"	1X 12"x6'	3X 12"
Evh-36-120	3' X 10'	1X 36"x84"	2X 36"x18"	1X 36"x18"	1X 36"x5"	LX	1 ¼"	6X 15"	1X 15"x6'	3X 15"
Evh-36-144	3' X 12'	1X 36"x104"	2X 36"x20"	1X 36"x20"	1X 36"x5"	LX	1 ¼"	6X 15"	1X 15"x6'	3X 15"
Evh-42-144	3 ½' X 12'	1X 42"x104"	2X 42"x20"	1X 42"x20"	1X 42"x5"	LX	1 ¼"	6X 15"	1X 15"x6'	3X 15"
Evh-48-168	4' X 14'	1X 48"x120"	2X 48"x24"	1X 48"x24"	1X 48"x5"	LX	1 ¼"	6X 15"	1X 15"x6'	4X 15"
Evh-60-168	5' X 14'	1X 60"x120"	2X 60"x24"	1X 60"x24"	1X 60"x5"	LX	1 ½"	6X 18"	1X 20"x6'	4X 20"
Evh-72-168	6' X 14'	1X 72"x120"	2X 72"x24"	1X 72"x24"	1X 72"x5"	LX	1 ½"	6X 20"	1X 22"x6'	4X 22"
Evh-72-192	6' X 16'	1X 72"x120"	3X 72"x24"	1X 72"x24"	1X 72"x5"	LX	1 ½"	6X 20"	1X 22"x6'	5X 22"

PANS, WATER JACKET TANKS



Glass tubing for sap

5/8" OD x 12" Long 60Y01-625-12

Propane Bottling

80J03-15-15 Propane bottling pan with stainless steel stand. Includes: 15"x15" pan, burner, stand, shelf, water pan, cover, valve

80J04-15-15 Pan 15" x 15" for propane bottler w/ 1/2" valve

80J05-15-15 Water pan for 15" x 15" propane bottler

80J07-001 Propane burner

80J06-15-15 Stand and shelf for 15" x 15" propane bottler



Auto draw-off

1 1/2" 60001-150

2" 60001-200



Auto draw-off probe

1 1/2"-2" 60001-SND



Syrup filter tank



Single rectangular on wheels

20 gal SIR-RT-20GAL-ROUES

34 gal SIR-RT-34GAL-ROUES

Double

2 x 16 gal SIR-DB-NI-2X16GAL

2 x 20 gal SIR-DB-NI-2X20GAL

2 x 34 gal SIR-DB-NI-2X34GAL

2 x 40 gal SIR-DB-NI-2X40GAL

2 x 16 gal - Insulated SIR-DB-IS-2X16GAL

2 x 20 gal - Insulated SIR-DB-IS-2X20GAL

2 x 34 gal - Insulated SIR-DB-IS-2X34GAL

2 x 40 gal - Insulated SIR-DB-IS-2X40GAL

Triple

3 x 30 gal SIR-TR-NI-3X40GAL

Round

15 gal (1 syrup filter support) SIR-RD-15GAL-SUP1T

15 gal (without syrup filter support) SIR-RD-15GAL-SSUP

20 gal (2 syrup filter supports) SIR-RD-20GAL-SUP2T

20 gal (without syrup filter support) SIR-RD-20GAL-SSUP

40 gal (3 syrup filter supports) SIR-RD-40GAL-SUP3T

40 gal without syrup filter support SIR-RD-40GAL-SSUP



Support on wheels for syrup filter tank

15 gal SIR-SUP-RD-15GAL

20 gal SIR-SUP-RD-20GAL

40 gal SIR-SUP-RD-40GAL



Electric Water Jacket Tank - SS

16 gal (19gal US), 2 x 3 000 W Heating elements 80D02-16-2-3000

20 gal (22gal US), 2 x 3 000 W Heating elements 80D02-20-2-3000

35 gal (42gal US), 2 x 3 000 W Heating elements 80D02-35-2-3000

40 gal (48gal US), 2 x 3 000 W Heating elements 80D02-40-2-3000



Maple butter machine

3/4 hp - 3/4" pump output - 3 gal

BAB-STANDARD

STAINLESS STEEL TANKS



High-quality welds

- Smooth welded joints, facilitates cleaning
- Argon Welded (TIG) no lead is used in our assembly joints
- Several options available :
 - Output position (front/underneath)
 - Overflow (with/without)
 - Raise (with/without)

Tanks are made of stainless steel 304 - 20ga - BA
The frame is made of aluminum

Dimensions W x L x H	Capacity IMP gal	Capacity US gal	Dimensions W x L x H	Capacity IMP gal	Capacity US gal
3' x 4' x 24"	125	150	*4' x 10' x 48"	805	966
3' x 8' x 24"	250	301	*4' x 12' x 48"	970	1164
3' x 12' x 24"	376	451	*4' x 16' x 48"	1290	1549
3' x 4' x 30"	162	195	4' x 8' x 56"	840	1014
3' x 8' x 30"	325	391	4' x 10' x 56"	1055	1267
3' x 12' x 30"	488	586	4' x 12' x 56"	1265	1521
3' x 4' x 36"	200	240	4' x 16' x 56"	1685	2028
3' x 8' x 36"	400	480	4½' x 10' x 36"	705	847
3' x 12' x 36"	600	721	4½' x 12' x 36"	845	1016
3' x 4' x 42"	237	285	4½' x 16' x 36"	1130	1355
3' x 8' x 42"	475	570	4½' x 10' x 42"	845	1015
3' x 10' x 42"	594	713	4½' x 12' x 42"	1015	1218
3' x 12' x 42"	713	855	4½' x 16' x 42"	1355	1625
3' x 16' x 42"	950	1141	4½' x 10' x 48"	978	1183
4' x 4' x 24"	156	188	4½' x 12' x 48"	1184	1420
4' x 8' x 24"	313	376	4½' x 16' x 48"	1580	1894
4' x 10' x 24"	391	470	4½' x 10' x 54"	1125	1352
4' x 4' x 30"	206	247	4½' x 12' x 54"	1350	1622
4' x 8' x 30"	412	495	4½' x 16' x 54"	1800	2163
4' x 10' x 30"	516	619	4½' x 10' x 60"	1265	1520
4' x 12' x 30"	620	743	4½' x 12' x 60"	1520	1824
4' x 16' x 30"	826	991	4½' x 16' x 60"	2025	2432
4' x 4' x 36"	256	307	5' x 10' x 36"	765	921
4' x 8' x 36"	512	615	5' x 12' x 36"	920	1105
4' x 10' x 36"	640	769	5' x 16' x 36"	1229	1474
4' x 12' x 36"	769	923	5' x 10' x 42"	924	1108
4' x 16' x 36"	1025	1230	5' x 12' x 42"	1109	1330
4' x 4' x 42"	306	367	5' x 16' x 42"	1478	1773
4' x 8' x 42"	612	735	5' x 10' x 48"	1080	1295
4' x 10' x 42"	765	918	5' x 12' x 48"	1296	1554
4' x 12' x 42"	918	1102	5' x 16' x 48"	1728	2072
4' x 16' x 42"	1225	1470	5' x 10' x 54"	1236	1482
*4' x 4' x 48"	320	384	5' x 12' x 54"	1480	1778
*4' x 8' x 48"	645	774	5' x 16' x 54"	1978	2371

* Interior height is 44"

More sizes available

Accessories

25H02-BHR120C	Releaser support for Tank 1" wide - 5' max length
25I01-BHR432-48	Tank Float 48"
25I01-BHR432-60	Tank Float 60"
25I01-BHR432-72	Tank Float 72"

For dimensions overall, add

- 3 5/8" to the width and to the length
- 2" to the height for the output below
- 3 1/2" to the height the front output

STAINLESS STEEL PRODUCTS



Hoods



Chinese hats



Base stacks

Other stainless steel products available

- Roof Jacks
- Stack Hats (Tilt, Chinese)
- Round Stacks (Smoke, Steam)
- Collars
- Base stacks
- Hoods
- Pipes
- Preheater

Many sizes available

STAINLESS STEEL FILTER PRESS



12" x 12"

Model that allows the installation of 1 to 10 filtration plates with 12 ton hydraulic and air jack
10 plates 12" x 12" = 1 440" of filtration



Industrial and Maple Syrup Large size model

with 20 ton hydraulic and air jack

Accessories included:

- Drainage valve
- Industrial wheels with bearing
- Inclined pan to ease emptying
- Drain plug on the pan
- Stainless steel jack rod
- Divider to reduce the number of plates
- 2 sets of filters for each syrup press
- Support to install the pump



20" x 20"

Model that allows the installation of 7 to 20 filtration plates with 20 ton hydraulic and air jack
7 plates 20" x 20" = 2 880" of filtration

Determine the quantity of plates required

	1 Plate = 1 000 Taps
12" x 12" Filter press	Example : 2 Plates = 2 000 Taps 1 Filtration Plate = about 3 drums
20" x 20" Filter press	Example : 7 Filtration Plates = about 21 drums
20 plaques 20" x 20" = 8 000" de filtration	